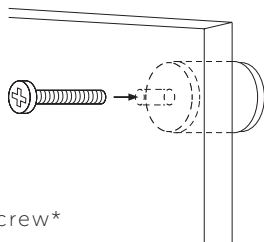


## FURNITURE KNOB

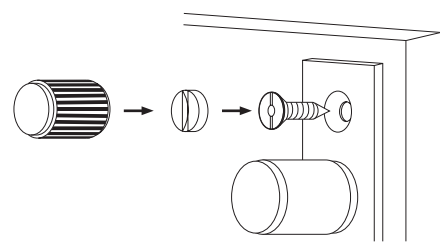
1. Drill holes.
2. Attach knob to door with screw.



### Contents

**2x** M4 x 25 mm screw\*

\*Fits doors & drawers of max 16 mm.



### Contents

**4x** Countersunk screw\* (+ 2 spare)

**4x** Coin cap

**1x** Coin cap installation tool\*\*

\* Fits doors & drawers of 16 mm and thicker.

\*\* Coinscrew tool **must be used by hand only.**

## FURNITURE KNOB / PLATE

1. Pre-drill holes to prevent cracks. Drill template available to download from [busterandpunch.com](http://busterandpunch.com).
2. Attach handle to door with countersunk screws.
3. Attach coin caps to countersunk screws. Use coinscrew tool to tighten screws.



[BUSTERANDPUNCH.COM](http://busterandpunch.com)

*BUSTER + PUNCH*

**HARDWARE  
FURNITURE KNOB**

EUROPE INSTRUCTIONS

### CARE INSTRUCTIONS

Use mild detergent and soft damp cloth

