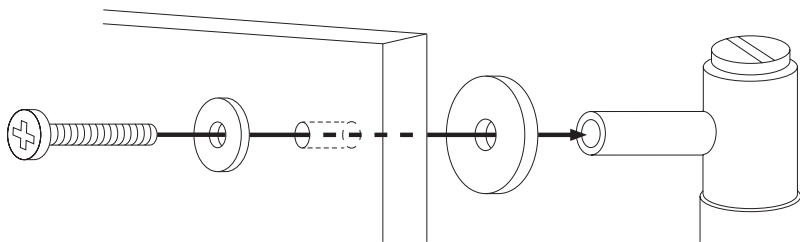


## CLOSET BAR

1. Drill hole, drill template available to download from [busterandpunch.com](http://busterandpunch.com).
2. Attach closet bar to door from the back with screws & washer. Use small discs between closet bar & door to stabilize the handle.



### Contents

- 2x M5 x 30 mm screw\*
- 2x Washer
- 2x Small disc

\*Fits doors & drawers of max 20 mm.



[BUSTERANDPUNCH.COM](http://busterandpunch.com)

*BUSTER + PUNCH*

**HARDWARE**

**CLOSET BAR**

EUROPE INSTRUCTIONS

### CARE INSTRUCTIONS

Use mild detergent and soft damp cloth

